

Trees and turf are both important parts of our landscapes. Turf is a great place to play and socialize. Trees provide shade to relax in and give structure to a landscape.



To get the most from our landscapes we need to consider the maintenance and health of each component both separately and together.



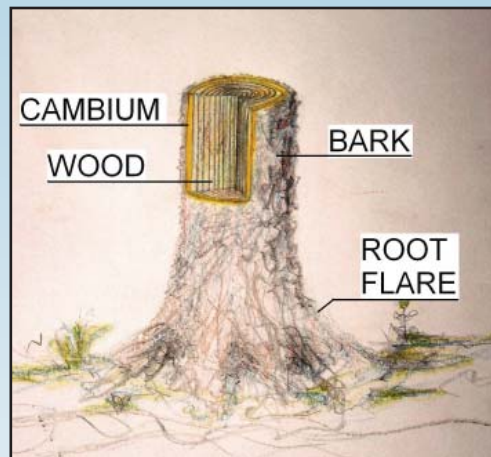
www.bgky.org/tree

Trees and Turf

Conflicts and Solutions



How Trees Function



Bark protects the cambium from damage, drying out, insects, and diseases.

Cambium transports water and nutrients up from roots and sugars from the leaves to all parts of the tree.

Wood provides structural support to the tree but does not transport water or nutrients.

Root Flare transitions from trunk to root tissue and provides structural support.

Potential Conflicts Between Trees and Turf and Practical Solutions

String Trimmer and Mower Damage

Mowing and trimming are necessary maintenance activities, but equipment can easily and very quickly damage a tree.

- Loss of bark exposes the cambium and wood to decay fungi which can rot the structural support of the tree creating a hazard.
- Exposure of the cambium stops the flow of water and nutrients. This can lead to the slow decline or death of branches or the whole tree.



When using herbicides to control turf around trees be careful not to spray suckers or any other part of the tree.

Solution

Keep equipment away from the tree:

- mulch
- trunk guards
- no turf zone



Mulch Volcano (Too Much Mulch)

Too much mulch can rot the bark on the tree or lead to girdling roots.



Correct Mulching

- less than 4 inches
- does not touch trunk of tree

